



INSTALLATION MANUAL

MUSWAY PLUG & PLAY

KIA EV6

(Meridian Sound System)





Installation Manual

Kia EV6
Plug & Play Sound Upgrade



Necessary tools



Ratchet with 14mm cup



In the package



Musway D8v3
(Configured)



Plug & Play cable set



Estimated installation time

Estimated assembly time is 30 minutes on this package. Time spent may vary according to experience and level of knowledge.





Installation Manual

Kia EV6

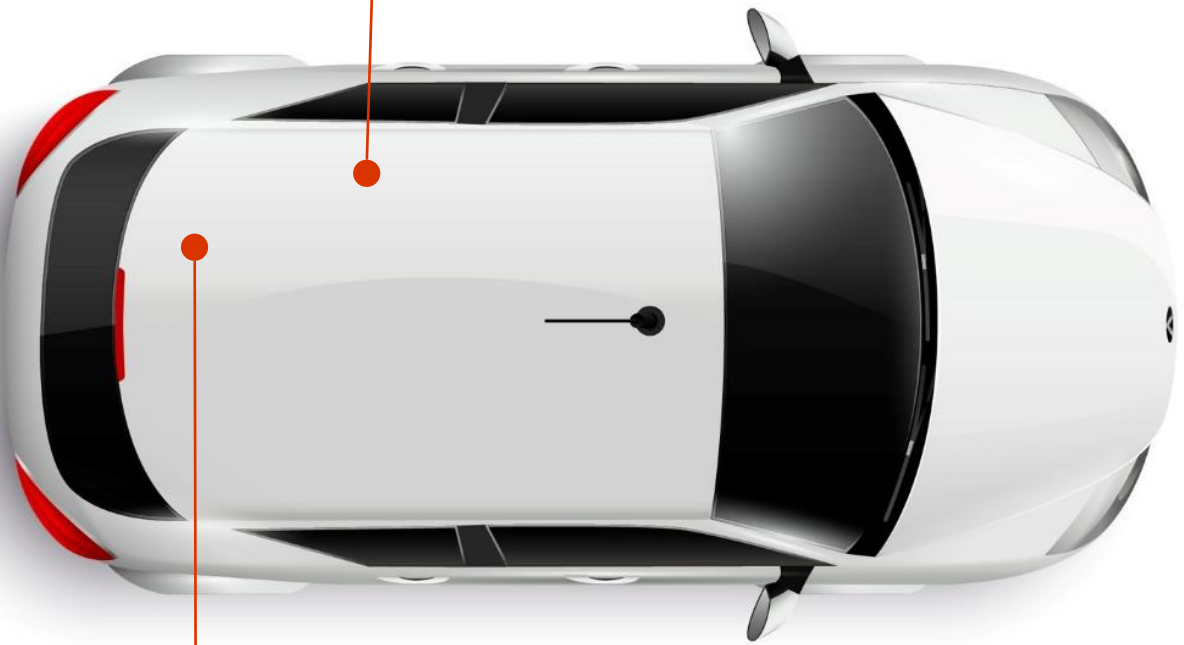
Plug & Play Sound Upgrade

1

Placement

Overview of connection points and location of products.

Original amplifier
under the seat



Musway amplifier
behind seat



Installation Manual

Kia EV6
Plug & Play Sound Upgrade

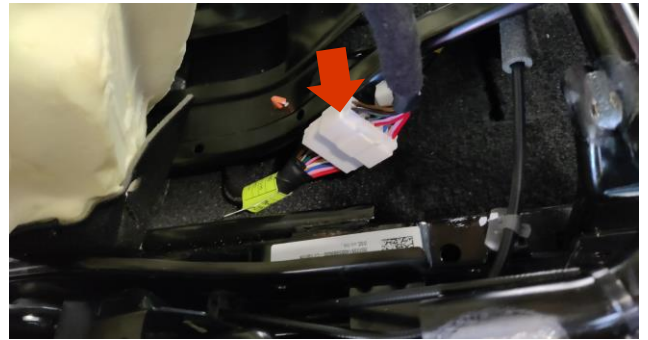
2 Dismantle the rear seat

Disassemble the seat cushion by moving it upwards at the front



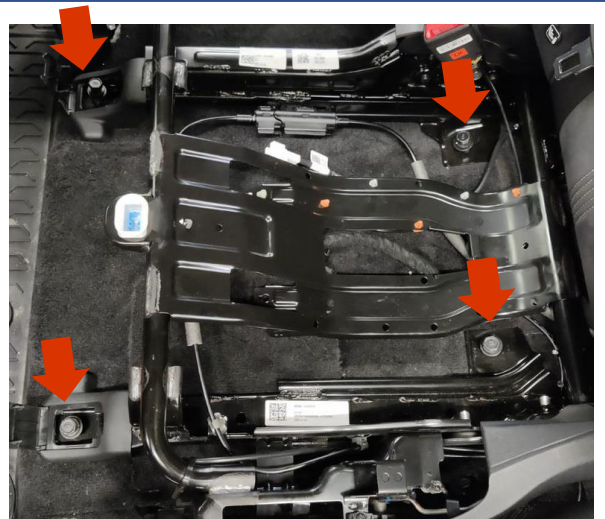
3 Dismantle the rear seat

Pull out the plugs on each side of the seat cushion



4 Disassemble rear seat frame

Disassemble the plate under the seat cushion 4 pcs 14mm bolt





Installation Manual

Kia EV6
Plug & Play Sound Upgrade

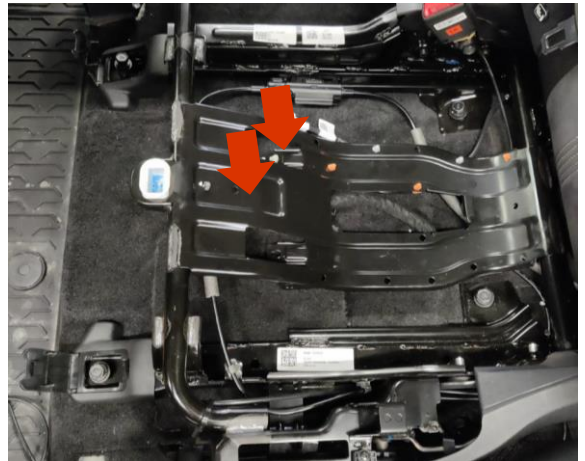
5 Dismantle the rear seat

Skru ut bolten i bakkant av setet
14mm koppnøkkel



6 Disassemble rear seat

Disconnect a plug and pull out a wire





Installation Manual

Kia EV6
Plug & Play Sound Upgrade

7 Locate original amplifier

Locate the original amplifier. It is under the carpet.



8 Connecting

Connect the cable set between the original plug and the original amplifier.



9 Settings

Check that the amplifier's DIP switches are adjusted as shown here.

Switch 1-7 must set at 18v
Switch 8 must set at 10V





Installation Manual

Kia EV6
Plug & Play Sound Upgrade

10 Place amplifier

Amplifier is placed against the back wall with Velcro (supplied).



11 Test

Check that everything works before assembling the rear seat



All speakers will be damaged by abuse. Be careful not to play too loud so that the speakers' coil is burned off. It is not covered by warranty or complaints.

Customer support +47 48 08 08 20

