

INSTALLATION MANUAL



Table of Contents

1. INTRODUCTION	2
2. RECOMMENDATIONS	2
3. CONNECTION SCHEME OF THE MODULE	4
4. INSTALLATION OF THE 32 PIN CONNECTOR [W-RD103].....	5
5. CODING	6
6. BASIC TECHNICAL PARAMETERS	7
7. COMPONENTS OF THE SET	7

1. INTRODUCTION

JAUX_BT-02 module with bluetooth function for AUDI RNS-E systems.

Using the built-in Bluetooth module device allows to wireless audio playback from portable devices. Device is equipped with additional line input, which gives a possibility to listen of sound using the AUX connector. The module fully integrates with the CAN system. Plug and Play installation.

important:

If the car is equipped with a factory-made AMI module and we want to keep it functionality and at the same time connect additional devices (JRDAB-02 or JAUX_BT-02), use the CAN-JSW-02 switch available in our offer.

2. RECOMMENDATIONS

Copyright

All assembly and operating instructions are protected by copyright. Distributing documentation via print or online media is only allowed with the prior consent of JUNA electronics.

Important

Please read installation manual very careful and keep it in right way. During installation, pay attention to all relevant aspects related to safety of installation and use of the device.

The priority during the design and production of all devices by JUNA electronics company is security and service comfort. It has been achieved by applying the modern techniques of design and production processes of electronic devices.

Module should be installed in technical workshops by qualified personnel or by people who have experience in this type of installations. Installation of devices by not qualification people can cause injury to persons or damage to property.

It is recommended keep to the general safety rules and pay attention for any threat that can cause of damage to the vehicle.

2.1 RECOMMENDATIONS

We advice to mount device in safety place, where it is not exposed for moisture, water or too high temperatures.

Device should not be installed in places where it could difficult safe driving or operating efficiency of other units installed in vehicle.

The devices can be connected only to 12V. Modules can't be used in vehicles with 24V and higher voltage.

Please note that most of our devices are based on software that may require an update. That's why you should always mount the device in easily available place in the vehicle.

In some countries it may be necessary to check the legal provisions before installation and startup of the device. In the interest of high quality and development of our products, JUNA Electronics reserves the right to make technical changes.

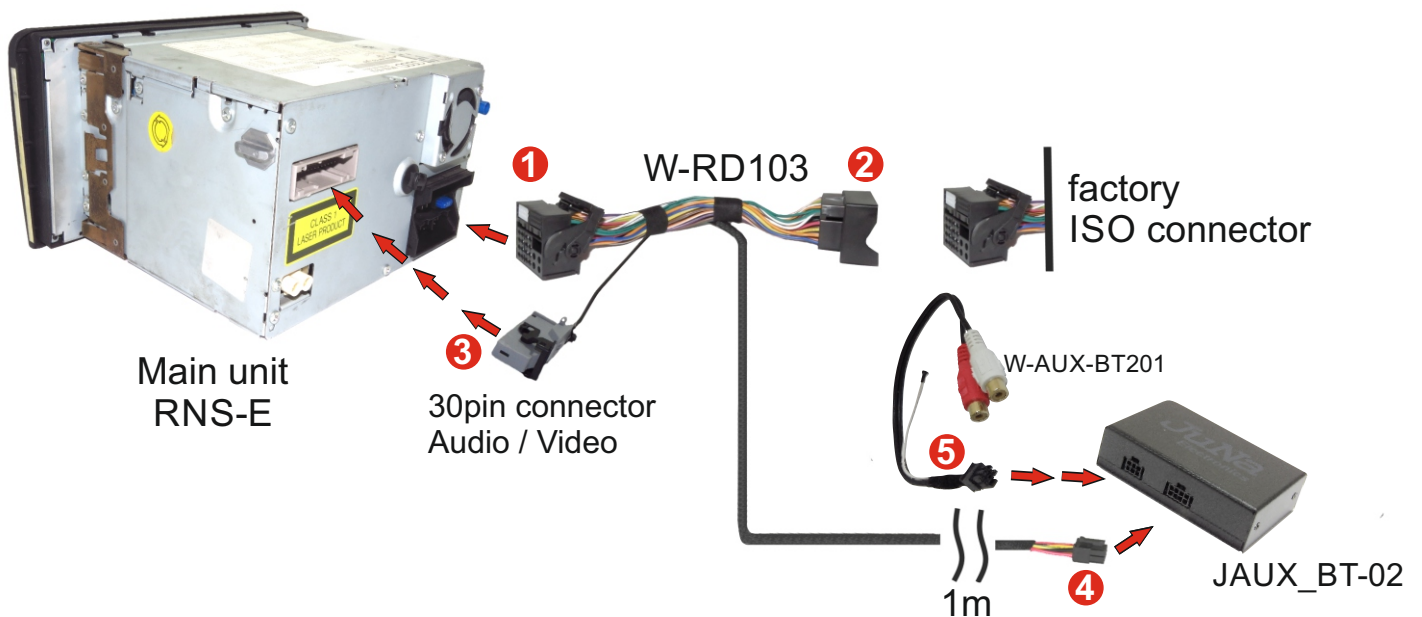
In the case of a warranty claim, the device should be sent back to the seller in original packaging with a detailed description of the problem with attached purchase invoice.

Warranty claims as well as exploitation rights expire due:

- A) Not authorized changes in devices or accessories, which have not been approved or have not been provided by the manufacturer or his partners.
- B) Opening the device's box
- C) Yourself repair the device
- D) Improper use / improper operation of the device
- E) Mechanical damage
- F) Flooding with water or other liquids

3. CONNECTION SCHEME OF THE MODULE

1. Switch off the ignition and vehicle radio
2. Disconnect the original ISO connector from the radio
3. Connect the W-RD103 ISO cable to the car radio ❶
4. Connect the factory ISO connector plug to the W-RD103 socket ❷
5. Connect (pre-assembled 30pin plug see item 4) to the radio ❸
6. Connect the plug (8pin) of the cable W-RD103 to the module JAUX_BT-02 ❹
7. Connect the W-AUX-BT201 cable to the JAUX_BT201 module ❺
8. Turn on the ignition switch and start the vehicle radio



INFORMATION:

If (AUX/Bluetooth) option doesn't appear in the source menu after connection of J AUX_BT-02 module then AMI platform must be activated via OBD connector
(see item 6/p.5)

4. INSTALLATION 32 PIN HEADER FROM SET

Vehicle with RNS-E multimedia system can be equipped with TV tuner, rear camera, AUX, etc. devices which are connected by 32 pin AMP Connector. In this case to connect JRDAB-02 module it is necessary to disassemble factory 32 Pin AMP Connector and install wires from cable of W-RD103 bundle. In case when vehicle is not equipped with additional devices uses 32 Pin AMP Connector then it is necessary to use 32 Pin AMP Connector which is included in JRDAB-02 set and install wires from cable of W-RD103 bundle.

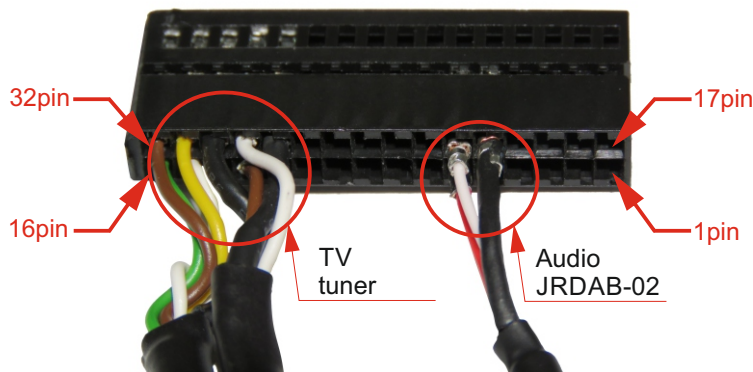
Important:: If RNS-E system is equipped with factory AUX unit it is necessary to disconnect AUX wires from 32 Pin Connector and replace them by wires from cable of W-RD103 bundle.

Both cases are connected according to diagram:

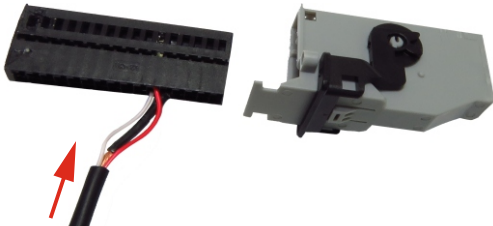
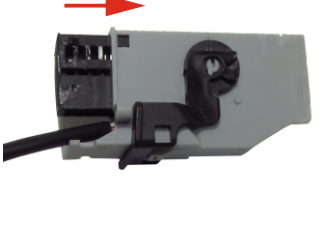

32	31	30	29	28	27	26	25	24	23	22	21	20	19	18	17
16	15	14	13	12	11	10	9	8	7	6	5	4	3	2	1

1 N.C.
 2 N.C.
 3 N.C.
 4 N.C.
 5 N.C.
 6 AUX-IN | right [W-RD103 - red]
 7 N.C.
 8 N.C.
 9 N.C.
 10 N.C.
 11 N.C.
 12 N.C.
 13 Audio-IN navigation system | right
 14 Navigation system screen | mass
 15 Video-IN navigation system | synchronization
 16 Video-IN navigation system | green

17 N.C.
 18 N.C.
 19 Signal-IN low frequency (-) (unused)
 20 Signal-IN low frequency (+) (unused)
 21 AUX-IN | mass [W-RD103 - black]
 22 AUX-IN | left [W-RD103 - white]
 23 N.C.
 24 N.C.
 25 N.C.
 26 N.C.
 27 N.C.
 28 Audio navigation system | mass
 29 Audio-IN navigation system | left
 30 Video navigation system | mass
 31 Video-IN navigation system | blue
 32 Video-IN navigation system | red

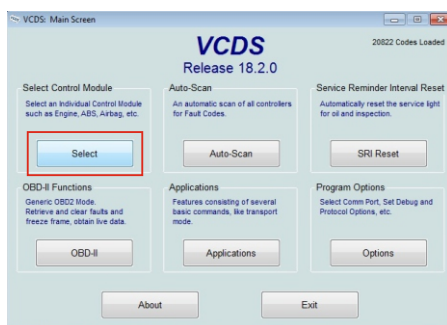


An example of connecting the factory navigation and the JRDAB-02 module for the RNS-E radio

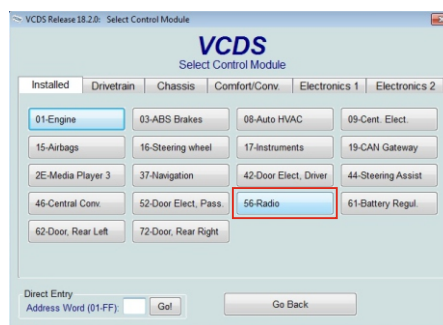
<p>Step 1</p> <p>Connect wires to proper sockets in black connector.</p> 	<p>Step 2</p> <p>Put black connector to gray housing.</p> 	<p>Step 3</p> <p>Connect the cable with the hose clamp to the gray 32 pin connector housing.</p> 
---	--	---

5. CODING

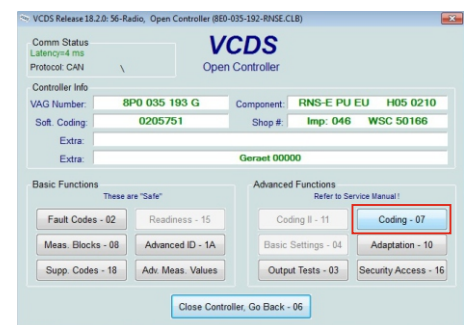
If the Audi Music Interface module is not installed in the car [AMI], it should be coded with the VAG, VCDS diagnostic program or other. Below is an example of how to encode with the VCDS program.



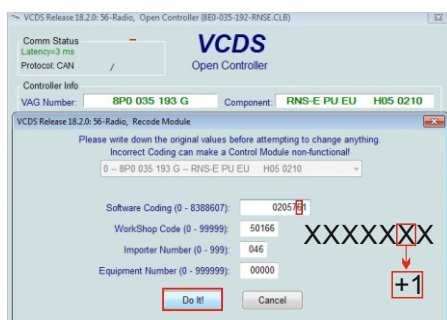
1. Select Control Mode.



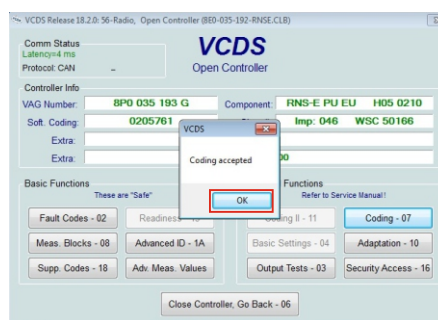
2. Option 56 Radio.



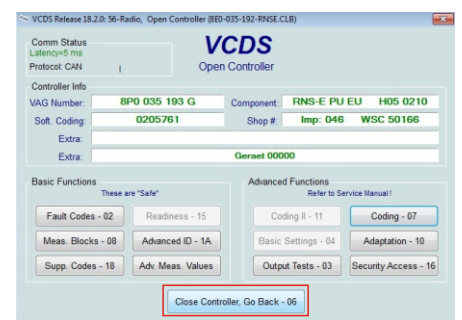
3. Codin - 07.



4. We always add 1. Change is saved with the "Do it" button.



5. We confirm changes.



6. We're leaving the coding process.

After the coding has been done, the radio should be reset.

We can achieve this, e.g. by:

- Momentary disconnection and connection of the radio power supply.
- Holding the **RADIO** + **SETUP** buttons (for about 10 seconds) until the radio is reset.

6. BASIC TECHNICAL PARAMETERS

1. Power supply voltage	- 12V
2. Power consumption with active Bluetooth	- 49mA
3. Power consumption without active Bluetooth	- 38mA
4. Resting current	- 0mA
5. Communication and control	- CAN bus
6. Housing	- Metal
7. Dimensions	- 62mm x 92mm x 25mm
8. Weight	- 153g

7. ELEMENTS OF THE SET

1. AUX/Bluetooth module [JAUX_BT-02]
2. Connection cables [W-RD103]
3. Bunch of socket RCA+Antena [W-AUX-BT201]

