



Installation manual :

- SPH-EVO950DAB-RM
- SPH-EVO107DAB-RM
- SPH-DA97DAB-RM

Compatible with vehicles equipped with original car radio and steering wheel control / Compatible with vehicles without original car radio and without steering wheel control.



RENAULT Master from 2019
NISSAN Interstar from 2022



Interface



SPH-EVO950DAB pre-assembled for
RENAULT Master & NISSAN Interstar



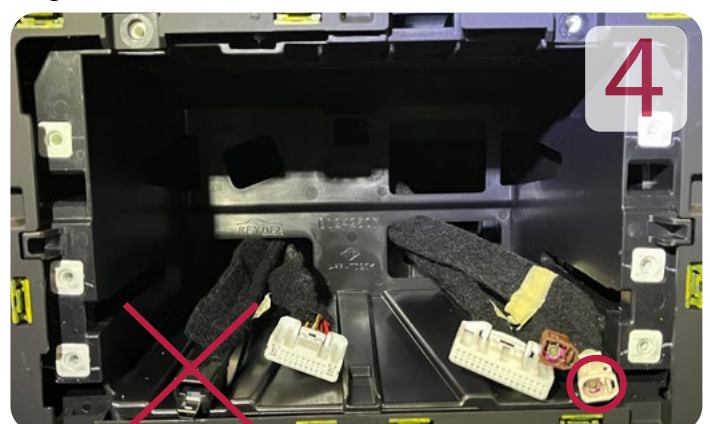
Remove the empty slot, the frame and the radio (screws x4)



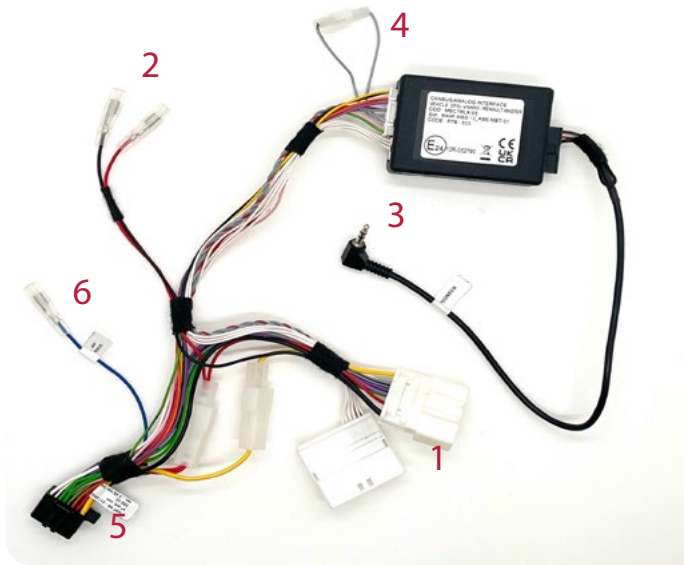
Remove the 2 screws on the top side of the frame to release the frame so that the original radio can be removed.



Cables and connectors of the original car radio

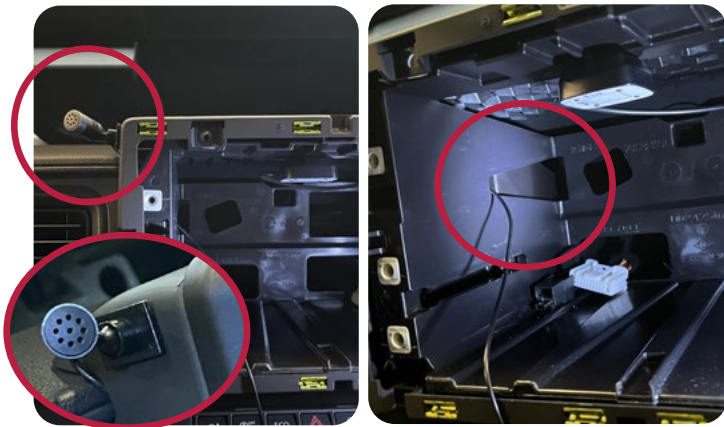


Cables and connectors on the non-original versions.
No USB connector available & white connector replaced by ISO FM

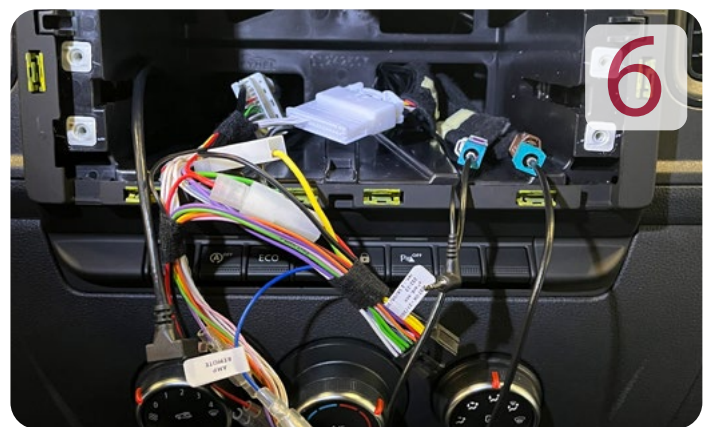


- 1 - Connection to vehicle connectors
- 2- Rear view camera power supply (camera option)
- 3 - Steering wheel control mini-jack - To be connected to the car radio chassis (SWC)
- 4 - Closed loop for vehicles with manual gearbox / Open loop for vehicles with automatic gearbox.
- 5 - To Pioneer main connector
- 6 - Remote output: Power supply for FM antenna adaptor

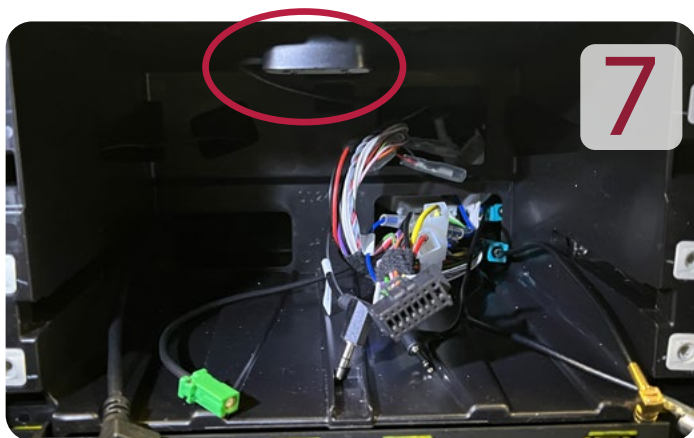
FM aerial connection: The SPH-EVO950DAB-CRM kit offers 2 types of aerial connection depending on the vehicle:
 for cars with original radio = FAKRA type connector
 for cars with non-original radio = FM ISO type connector



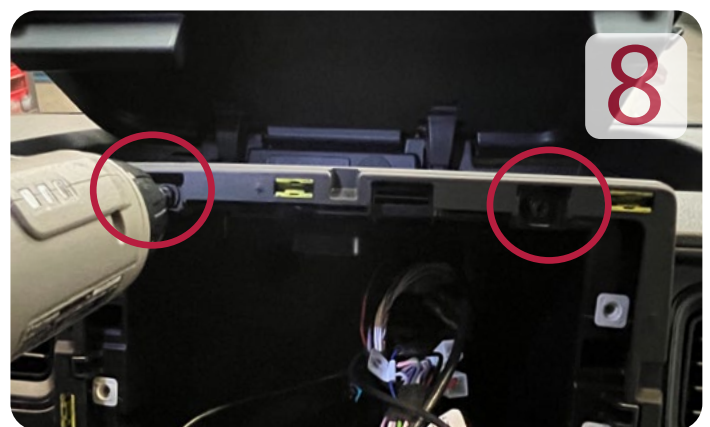
Suggested position for the microphone:
 top left side of the original frame.



Connect the cables as shown in the picture. DAB, FM and Microphone on the left / Remaining connectors on the right.



Tuck the harnesses and interface box as shown, to make it easier to install the car radio. To save time, the GPS antenna can be glued in place as shown in the picture (NOTE: the glue has to be very strong and the antenna's head should be facing upwards).



Install the 2 screws at the top of the frame



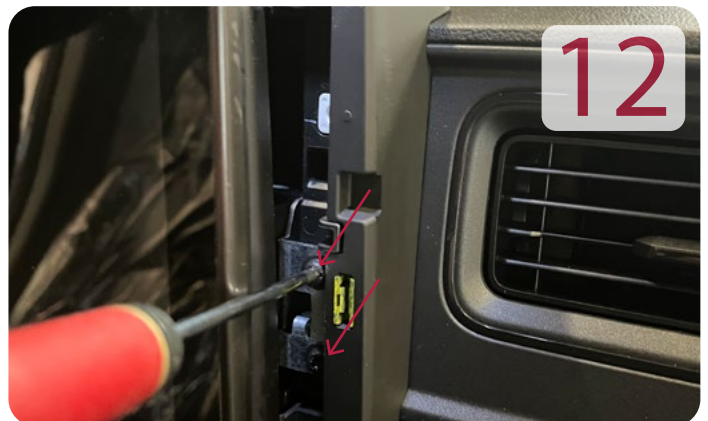
Install the car radio and connect all the connectors.



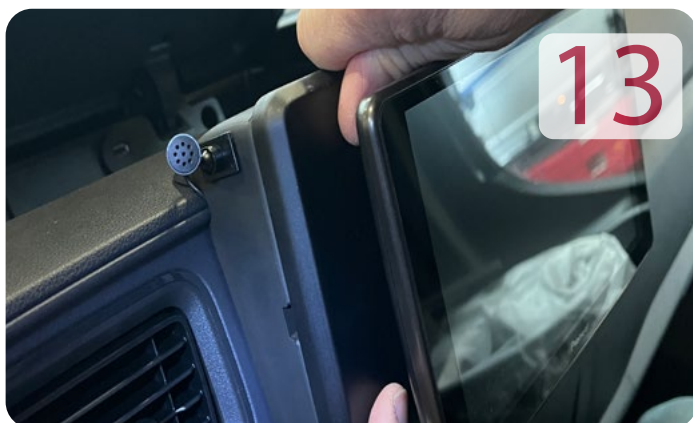
Slide the car radio all the way into the slot (before the next step, check that the car radio is working properly).



Slide the plastic trim panel to the right side and screw on the left bracket of the car radio.



Slide the plastic trim panel to the left side and screw on the right bracket of the car radio.



Reinstall and clip on the plastic definition trim.



Final result.