

# Stinger®

**6.8"**  
Infotainment  
System

  
Wireless

Works with  
 Apple CarPlay  
Works with  
 Android Auto

PN: IE268



## IE268

# Install / Quick Setup GUIDE



Scan For Detailed User Guide

<https://stingersolutions.com/pages/welcome-ie268>

**SiriusXM**  
READY

 Bluetooth®



## Included **Parts**

QTY	Description	Part NO
1	Radio Module	IE268
1	Radio Harness	-
1	GPS Antenna	PSEH-1109
1	External Microphone	PSEH-1108
1	Radio Trim	-
1	Radio Cage	-
6	Mounting Screws	-

## Radio **Wiring**

Color	Polarity	Function
Yellow	+	Constant 12 volt power source regardless of key position.
Red	+	Accessory 12 volt power source requires turning of the key position.
Black	-	Chassis ground.
Orange	+	Illumination wire, provides 0 volts when lights are off and 12 volts when the vehicle exterior lights are on
Lt Green	-	Parking brake, vehicle provides a ground signal when parking brake is pulled up.
Blue	+	Power antenna, provides 12 volts from the receiver when the FM or AM radio is being used. Turns off on any other source.

## Radio **Wiring Cont**

Color	Polarity	Function
Blue/ White	+	Amplifier turn on, provides 12 volts from the receiver when receiver is turned on.
Pink	+	V.S.S. – Vehicle speed sense (Recomended)
White/ Grey	+	Camera 2 Trigger (Optional)
White/ Green	+	Cammera 3 Trigger (Optional)
White/ Purple	+	Cammera 4 Trigger (Optional)
White	+	Left Front Speaker
White/ Black	-	Left Front Speaker
Grey	+	Right Front Speaker
Grey/ Black	-	Right Front Speaker
Green	+	Left Rear Speaker
Green/ Black	-	Left Rear Speaker
Purple	+	Right Rear Speaker
Purple/ Black	-	Right Rear Speaker
Brown	Input	SWC 1 (Steering Wheel Control 1)
Brown / Black	Input	SWC 2 (Steering Wheel Control 2)
Orange 3.5	Input	SWC input to Radio



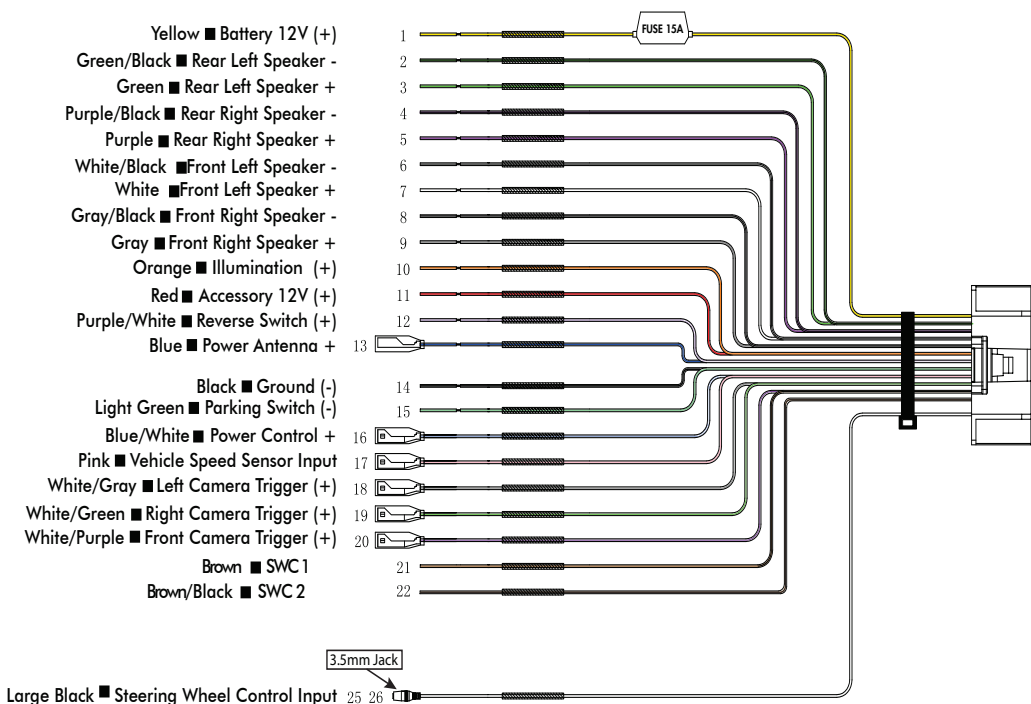
## Installation **Notes**

- When connecting optional steering wheel controls, please refer to SWC manufactures wiring instructions to connect.
- The IE268 Power harness should color match wire colors of vehicle specific harness being used to connect to vehicle. This harness is sold separately.
- It is not advised to remove OEM radio plugs to wire IE268 directly. A vehicle specific harness is needed.
- If searching for a vehicle specific harness, please visit **[www.PAC-Audio.com](http://www.PAC-Audio.com)**.
- When making wire connections, solder or use proper butt connectors are recommended.
- No exposed wire strands should be exposed after making wire connections.
- Do not plug wire harness into the vehicle until all wire connections have been complete and all connections have been verified to have no exposed wires or wire strands.

# Installation **Notes Cont**

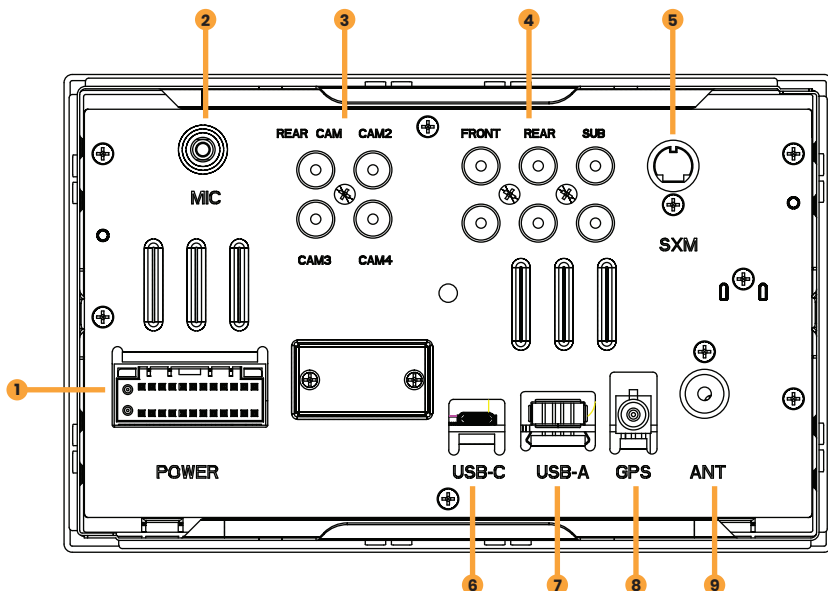
- If wires are unused, tape and secure wire ends for safety and to avoid unwanted failures.
- If Radio does not power on when vehicle is started, after installation is complete. Verify all wiring connections are correct and secure. Also, verify there are no blown fuses in vehicles fuse panels.

## Wire **Diagram**





## Radio **Connections**



### **1. Power Connection**

Main radio harness connection for power and factory wired speakers.

### **2. External Mic Connection (optional)**

3.5mm connection for External Microphone.

### **3. Camera Connection**

Yellow RCA terminals allowing up to 4 camera connections.

### **4. RCA Audio Outputs**

RCA outputs to allow connection to aftermarket amplifiers.

### **5. SiriusXM Connection**

Used when adding (optional) SXM Tuner. **Sold Separately**

### **6. USB-C Connection**

Used for wired Car Play/Android Auto and phone charging. **Additional Cable Required**

### **7. USB-A**

Used for Firmware updates, USB media, and phone charging. **Additional Cable Required**

### **8. GPS Antenna Connection**

Port to connect provided GPS antenna.

### **9. AM/FM Antenna Connection**

Factory radio antenna connection.

# THE BASICS



## 1. Reset Button

To Factory Reset Radio

## 2. Home Menu Button

Tap: Access the Home Menu.  
Dimmed menu items are not selectable.

## 3. Voice Button

Launches voice control

## 4. Mute Button

Mutes all Audio.

## 5. Volume Control

Increase or decrease volume

## 6. Power Button

Long press to power unit off / on

## 7. Clock

Tap: Adjust Clock Settings

## 8. Phone Status

Displays CP/AA connection. Phone service level and battery life.

## 9. Home Menu

Tap: Launch selected app



## GETTING STARTED

Clock

Source / Info

Connected Devices



### POWER UP!

With vehicle ignition in the ON or ACC position, the radio will automatically power on.

The source will automatically default to the last source used prior to powering down your IE268.

You can adjust the audio volume at start-up in **Audio Settings** on page 43.

The **Information Bar** is located at the top of the screen. Depending on the SOURCE, it will provide information or content sensitive controls. Also, displays time, phone info and Android Auto or Carplay connection status.

To select a SOURCE, press the HOME button. Sources that are not currently available are grayed out.

### Display Off

Press **Home Button > Swipe left > Display Off** to turn off your IE268.

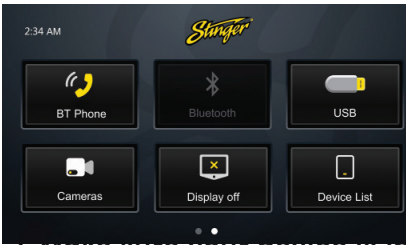
This is useful at night to prevent eye fatigue

Tap anywhere on the screen to turn the display back on.



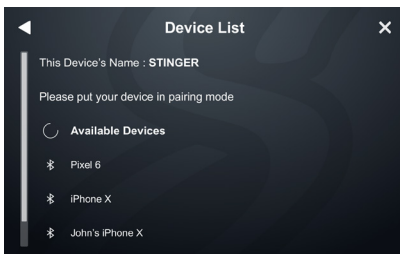
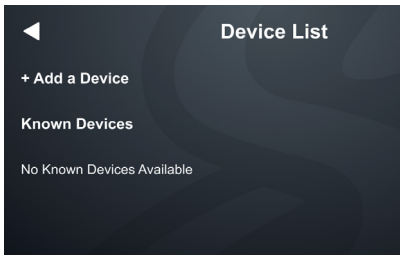
# GET CONNECTED

1. **Swipe left on the homescreen and tap Device List.**



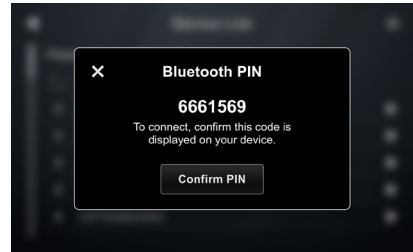
2. **Make sure your device is in pairing mode and tap +Add a Device.**

3. **Select your device from the list.**

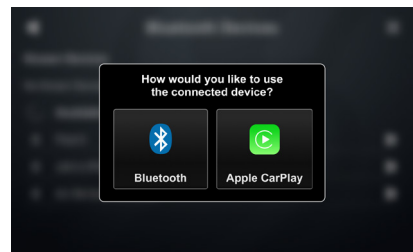
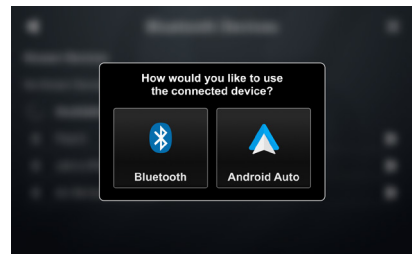


If your device does not appear in the device list, confirm it is discoverable and tap Available Devices to rescan.

4. **Confirm PIN Code on the head unit screen and the device.**



5. **Select the connection type you want to use with your device (bluetooth / phone projection).**



If you choose phone projection, your phone projection application will launch automatically.



Works with  
**Apple CarPlay**



Works with  
**Android Auto**

**SiriusXM**



**Bluetooth®**

Apple CarPlay is a trademark of Apple Inc. Use of the Apple CarPlay logo means that a vehicle user interface meets Apple performance standards. Apple is not responsible for the operation of this vehicle or its compliance with safety and regulatory standards. Please note that the use of this product with iPhone, iPod, or iPad may affect wireless performance.

SiriusXM and all related marks and logos are trademarks of Sirius XM Radio Inc. All rights reserved.

Android, Android Auto, Google Play and other marks are trademarks of Google LLC.

The Bluetooth word mark and logos are registered trademarks owned by Bluetooth SIG, INC. and any use of such marks by Stinger is under license.

Stinger and the Stinger logo are trademarks or registered trademarks of Stinger in the United States and other countries.

IE268 and the IE268 logo are trademarks or registered trademarks of Stinger in the United States and other countries.

**Visit [stingersolutions.com](http://stingersolutions.com) for updates and further information.**

**TECHNICAL SUPPORT:**

800-477-2267

[support@aampglobal.com](mailto:support@aampglobal.com)

**CUSTOMER SOLUTIONS:**

800-477-2267

[customersolutions@aampglobal.com](mailto:customersolutions@aampglobal.com)

Stinger is a Power Brand of AAMP Global  
15500 Lightwave Drive, Suite 202  
Clearwater, Florida 33760

**USER AGREEMENT:** End user agrees to use this product in compliance with the instructions and terms of use and with all State and Federal laws. STINGER provides instructions and safety warnings with respect to this product and disclaims all liability for any use not in conjunction with those instructions or other misuse of its product. If you do not agree, please discontinue use and contact STINGER. This product is intended for off-road use and passenger use only.

## System Firmware Update

---

Checking and updating the System Firmware is an important step for proper operation. This should be done first before setting any system and vehicle settings as those settings may be lost after an update.

Make sure a thumb drive containing your firmware update is inserted into an available USB port and tap System Firmware Update.

You can find firmware updates on the IE268 Product Page



*Stinger*<sup>®</sup>

**SiriusXM**  
READY

 **Bluetooth**<sup>®</sup>