



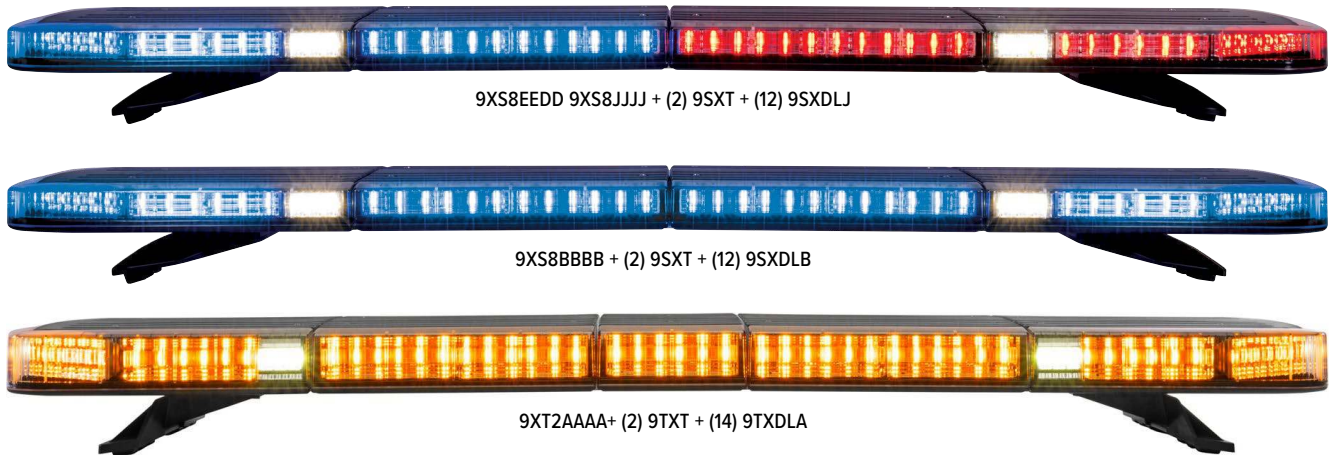
EDGE[®] 9X

SERIES LIGHTBARS



WHELEN[®]
MANUFACTURED IN AMERICA

Edge[®] 9X Series Lightbars



The Edge 9X combines the most valuable design aspects of our popular lightbars with expanded customization. The Edge 9X Series celebrates Whelen's long history of providing innovative, lifesaving equipment to the emergency warning industry. The competitively priced Edge 9X is designed for durability and is highly configurable for a wide range of applications. With models available in both Short and Tall profiles and in a variety of lengths, the Edge 9X Series is an ideal solution for any vehicle application.

FEATURES

- Available with SOLO™ or DUO™ 4 Color Corner Linear-LED® Modules
- Color and Smoked lenses available
- Hard-coated polycarbonate lenses resist environmental damage from sand, sun, salt, and road chemicals
- Photocell included
- Passenger side cable exit
- Advanced thermal design
- SOLO and DUO Linear6™ LED Warning & Scene Take-Down/Alley
- Molded polycarbonate Black top repels hail and other environmental damages
- Color tops available
- Brake/Tail/Turn option available
- Extended adjustable mounting feet

SPECS

Voltage: 12/24 VDC
 Certifications: SAE Class 1, California Title 13
 Dimensions: Short: 1.88" (4.78cm) H x 11.53" (29.29cm) W
 Tall: 2.73" (6.93cm) H x 11.53" (29.29cm) W
 Warranty: 5-year warranty



9XT5FFFF Edge 9X DUO



Color Lenses



Molded Polycarbonate Black Tops



Translucent Color Tops



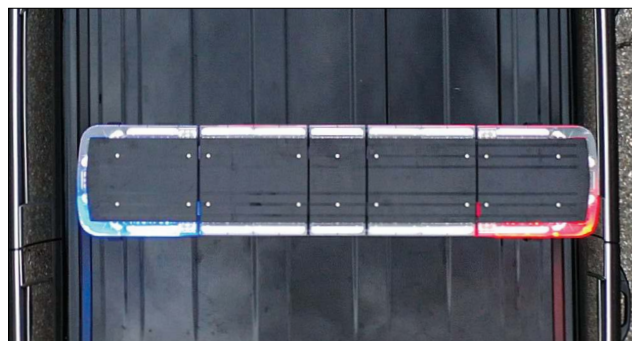
Hard-Coated Polycarbonate Lenses



WeCanX®

WeCanX is the smartest and most powerful CAN-based communication system we've ever engineered. Providing true system synchronization, greater speed capabilities, expanded peripheral add-ons, and full support of diagnostics, WeCanX is designed for optimal situational awareness programming.

WeCanX supports numerous combinations of WeCanX devices, including support for multiple Whelen peripherals of the same type on the same vehicle. All CANport™ signals can be configured as triggerable events.



Dynamic Variable Intensity™ Light Patterns

Edge® 9X includes Dynamic Variable Intensity (DVI) patterns* which are designed to help create an advanced level of safety at nighttime emergency scenes. Building on Whelen's situation-based nighttime mode, DVI flash patterns produce safer environments for first responders by gradually increasing and decreasing warning light intensity. DVI patterns help better convey visual information to approaching motorists, clearly indicating when an emergency vehicle is parked and improving their ability to navigate around an emergency scene safely.

*A WCX® controller is required to access DVI in Edge 9X lightbars

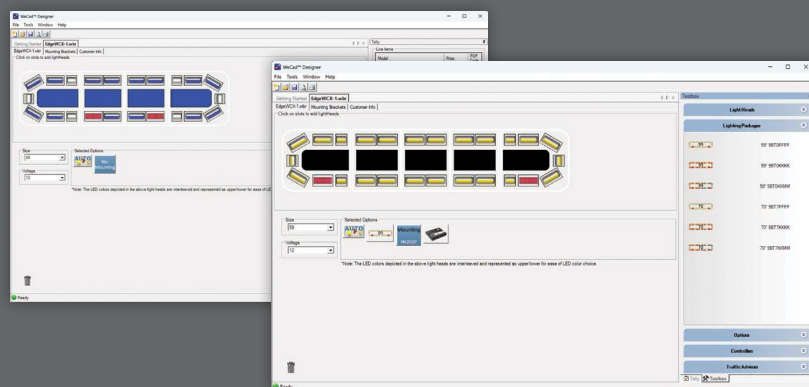
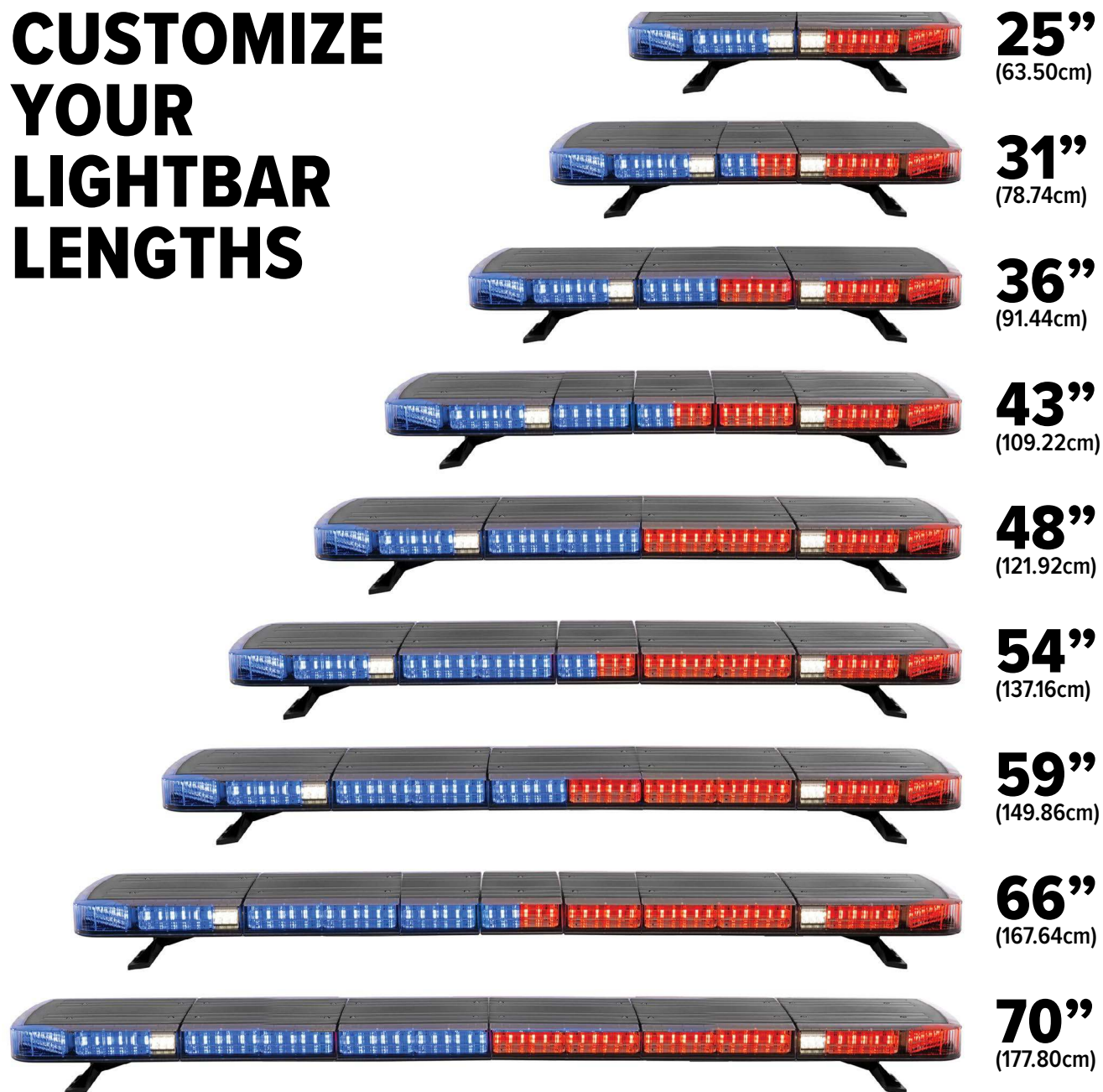


The Edge 9X requires a CORE® control system — scan here to find the right one for your vehicle or visit whelen.com/core

⚠ WARNING: This product may contain chemicals known to the State of California to cause cancer and birth defects or other reproductive harm. For more information, visit whelen.com/regulatory.

WHELEN®
MANUFACTURED IN AMERICA

CUSTOMIZE YOUR LIGHTBAR LENGTHS



Download WeCad™ for
full list of available options at
whelen.com/download-software

9X SERIES SHORT LIGHTBARS

12 VDC Model	24 VDC Model	Description
9XS5****	9XL5****	25", Four SOLO™ Color Corners
9XS3****	9XL3****	31", Four SOLO Color Corners
9XS6****	9XL6****	36", Four SOLO Color Corners
9XS4****	9XL4****	43", Four SOLO Color Corners
9XS8****	9XL8****	48", Four SOLO Color Corners
9XS2****	9XL2****	54", Four SOLO Color Corners
9XS0***	9XL0***	59", Four SOLO Color Corners
9XS1***	9XL1***	66", Four SOLO Color Corners
9XS7***	9XL7***	70", Four SOLO Color Corners
9XS5####	9XL5####	25", Four DUO™ Color Corners
9XS3####	9XL3####	31", Four DUO Color Corners
9XS6####	9XL6####	36", Four DUO Color Corners
9XS4####	9XL4####	43", Four DUO Color Corners
9XS8####	9XL8####	48", Four DUO Color Corners
9XS2####	9XL2####	54", Four DUO Color Corners
9XS0####	9XL0####	59", Four DUO Color Corners
9XS1####	9XL1####	66", Four DUO Color Corners
9XS7####	9XL7####	70", Four DUO Color Corners



Replace * symbol in model number: A = Amber, B = Blue, C = White, G = Green, R = Red
 Replace # symbol in model number: D = Red/White, E = Blue/White, F = Amber/White, H = Green/White, J = Red/Blue,
 K = Red/Amber, L = Red/Green, M = Blue/Amber, N = Blue/Green, P = Amber/Green

9X SERIES TALL LIGHTBARS

12 VDC Model	24 VDC Model	Description
9XT5****	9XH5****	25", Four SOLO Color Corners
9XT3****	9XH3****	31", Four SOLO Color Corners
9XT6****	9XH6****	36", Four SOLO Color Corners
9XT4****	9XH4****	43", Four SOLO Color Corners
9XT8****	9XH8****	48", Four SOLO Color Corners
9XT2****	9XH2****	54", Four SOLO Color Corners
9XT0***	9XH0***	59", Four SOLO Color Corners
9XT1***	9XH1***	66", Four SOLO Color Corners
9XT7***	9XH7***	70", Four SOLO Color Corners
9XT5####	9XH5####	25", Four DUO Color Corners
9XT3####	9XH3####	31", Four DUO Color Corners
9XT6####	9XH6####	36", Four DUO Color Corners
9XT4####	9XH4####	43", Four DUO Color Corners
9XT8####	9XH8####	48", Four DUO Color Corners
9XT2####	9XH2####	54", Four DUO Color Corners
9XT0####	9XH0####	59", Four DUO Color Corners
9XT1####	9XH1####	66", Four DUO Color Corners
9XT7####	9XH7####	70", Four DUO Color Corners

COLOR LENS OPTIONS

9XS	9XT	Description
9XSEND*	9XTEND*	Color End Lens, Amber, Blue, or Red, When Purchased with a Lightbar
9XSEND#	9XTEND#	Color End Lens with Alley Window, Red/Clear, Blue/Clear, or Amber/Clear, When Purchased with a Lightbar
9XSSCNT*	9XTSCNT*	Color Inboard Lens, Single Section, Amber, Blue, or Red, When Purchased with a Lightbar
9XSDCNT*	9XTDCNT*	Color Inboard Lens, Double Section, Amber, Blue, or Red, When Purchased with a Lightbar



Replace * symbol in model number: A = Amber, B = Blue, R = Red
 Replace # symbol in model number: D = Red/Clear, E = Blue/Clear,
 F = Amber/Clear



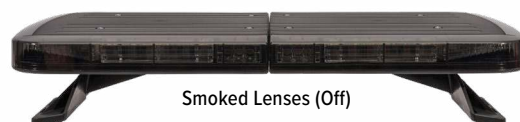
Color Lenses (Off)



Color Lenses (On)

SMOKED LENS OPTIONS

9XS	9XT	Description
9XSENDX	9XTENDX	Smoked End Lens, When Purchased with a Lightbar
9XSSCNTX	9XTSCNTX	Smoked Inboard Lens, Single Section, When Purchased with a Lightbar
9XSDCNTX	9XTDCNTX	Smoked Inboard Lens, Double Section, When Purchased with a Lightbar



Smoked Lenses (Off)



Smoked Lenses (On)

WARNING: This product may contain chemicals known to the State of California to cause cancer and birth defects or other reproductive harm. For more information, visit whelen.com/regulatory.

WHELEN
 MANUFACTURED IN AMERICA

Edge® 9X Series Lightbar Options

EDGE 9X SERIES OPTIONS

12 VDC Model	24 VDC Model	Description
Short Edge 9X Lightbars		
9SXDL***	–	One Long Super-LED® Lighthouse, Split-Color Primary Warning with Full-Color Secondary Warning for Center Mount on 31", 43" and 54" Short Edge 9X Lightbars Only
9SXDL*	9LXDL*	One SOLO® Color Long Super-LED Lighthouse, Short Edge 9X Lightbar
9SXDS*	9LXDS*	One SOLO Color Short Super-LED Lighthouse, For Use in Take-Down or Alley Position, Short Edge 9X Lightbar
9SXDL#	9LXDL#	One DUO® Color Long Super-LED Lighthouse, Red/White, Blue/White, Amber/White, Green/White, Red/Blue, Red/Amber, Red/Green, Blue/Amber, Blue/Green, or Amber/Green
9SXTW*	–	One DUO Color Super-LED Take-Down or Alley Light, Amber/White, Blue/White, Green/White, Red/White, Short Lightbar
9SXT	9LXT	Super-LED Take-Down or Alley Lights, White, Pair, Short Edge 9X Lightbar
Tall Edge 9X Lightbars		
9TXDL***	–	One Long Super-LED Lighthouse, Split-Color Primary Warning with Full-Color Secondary Warning for Center Mount on 31", 43" and 54" Tall Edge 9X Lightbars Only
9TXDL*	9HXL*	One SOLO Color Long Super-LED Lighthouse, Tall Edge 9X Lightbar
9TXDS*	9HXDS*	One SOLO Color Short Super-LED Lighthouse, For Use in Take-Down or Alley Position, Tall Edge 9X Lightbar
9TXDL#	9HXL#	One DUO Color Long Super-LED Lighthouse, Red/White, Blue/White, Amber/White, Green/White, Red/Blue, Red/Amber, Red/Green, Blue/Amber, Blue/Green, or Amber/Green
9TXTW*	–	One DUO Color Super-LED Take-Down or Alley Light, Amber/White, Blue/White, Green/White, Red/White, Tall Lightbar
9TXT	9HXT	Super-LED Take-Down or Alley Lights, White, Pair, Tall Edge 9X Lightbar
Compatible with Short and Tall Edge 9X Lightbars		
9SXDESCBL		Driver Side Cable Exit, Short Lightbar
9XEND*		Color Top, End, for 9X Series, Additional Charge When Purchased with Edge 9X Lightbar, Amber, Blue, and Red
9XSCNT*		Color Top, Single Section, for 9X Series, Additional Charge When Purchased with Edge 9X Lightbar, Amber, Blue, and Red
9XDCNT*		Color Top, Double Section, for 9X Series, Additional Charge When Purchased with Edge 9X Lightbar, Amber, Blue, and Red
CCP		Core® Control Point for Use with WeCanX® Devices when NOT Using CenCom Core®
MKEL--		Adjustable Extended Length Mounting Kit for Edge 9X
MBEL--		Adjustable Extended Length Mounting Kit for Edge 9X, Black Straps

BRAKE/TAIL/TURN OPTIONS

Model	Description
9SXBTTT	Two Super-LED® Brake/Tail/Turn Lights with Red Color Filters, Short Lightbar
9SXBTTT	Two Super-LED Brake/Tail/Turn Lights with Clear Color Filters, Short Lightbar
9TXBTTT	Two Super-LED Brake/Tail/Turn Lights with Red Color Filters, Tall Lightbar
9TXBTTT	Two Super-LED Brake/Tail/Turn Lights with Clear Color Filters, Tall Lightbar
9LXBTTT	Two Super-LED Brake/Tail/Turn Lights with Red Color Filters, Short Lightbar, 24 VDC
9LXBTTT	Two Super-LED Brake/Tail/Turn Lights with Clear Color Filters, Short Lightbar, 24 VDC
9HXBTTT	Two Super-LED Brake/Tail/Turn Lights with Red Color Filters, Tall Lightbar, 24 VDC
9HXBTTT	Two Super-LED Brake/Tail/Turn Lights with Clear Color Filters, Tall Lightbar, 24 VDC



Replace * symbol in model number for LED color:

A = Amber, B = Blue, C = White, G = Green, R = Red

Replace # symbol in model number for colored tops:

A = Amber, B = Blue, R = Red

Replace # symbol in model number:

D = Red/White, E = Blue/White, F = Amber/White,

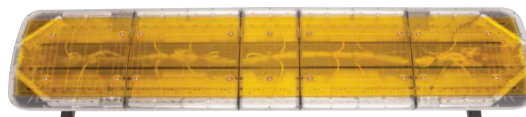
H = Green/White, J = Red/Blue, K = Red/Amber, L = Red/Green, M = Blue/Amber,

N = Blue/Green, P = Amber/Green

-- Available vehicle models for MKEL and MBEL may vary, please consult with your Whelen sales representative



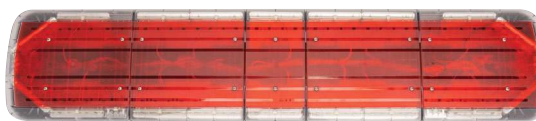
Scan the QR code for our Vehicle Outfitter or visit vehicleoutfitter.whelen.com



9XEND* (2), 9XSCNT* (1), 9XDCNT* (2)



9XEND* (2), 9XSCNT* (1), 9XDCNT* (2)

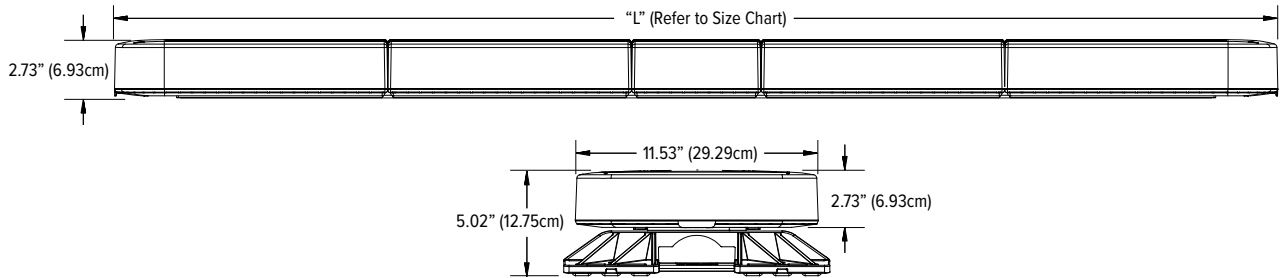
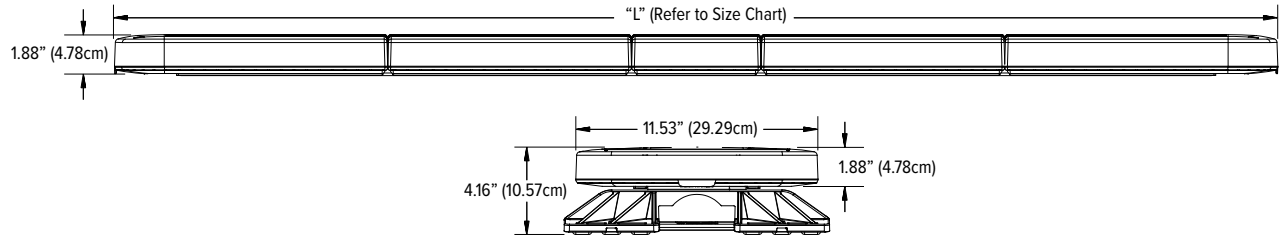


9XEND* (2), 9XSCNT* (1), 9XDCNT* (2)



Edge[®] 9X Series Lightbar Dimensions

EDGE 9X SHORT LIGHTBAR



"L" Size Chart

25" (63.50cm)	31" (78.74cm)	36" (91.44cm)	43" (109.22cm)	48" (121.92cm)	54" (137.16cm)	59" (149.86cm)	66" (167.64cm)	70" (177.80cm)
------------------	------------------	------------------	-------------------	-------------------	-------------------	-------------------	-------------------	-------------------



WARNING: This product may contain chemicals known to the State of California to cause cancer and birth defects or other reproductive harm. For more information, visit whelen.com/regulatory.

WHELEN[®]
MANUFACTURED IN AMERICA

EDGE[®] 9X

SERIES LIGHTBARS



WHELEN[®]
MANUFACTURED IN AMERICA

@WhelenENG



NASCAR
OFFICIAL WARNING LIGHTS

Preferred Warning Lights of



Whelen Engineering Company
(860) 526-9504
www.whelen.com

Whelen Engineering reserves
the right to upgrade and improve
products without notice.

© 2025 Whelen Engineering Company,
Inc. Printed in U.S.A.
Code No. B13571A - 05/25

All products proudly designed,
manufactured, and assembled in the U.S.A.
• ISO 9001 Registered QMS